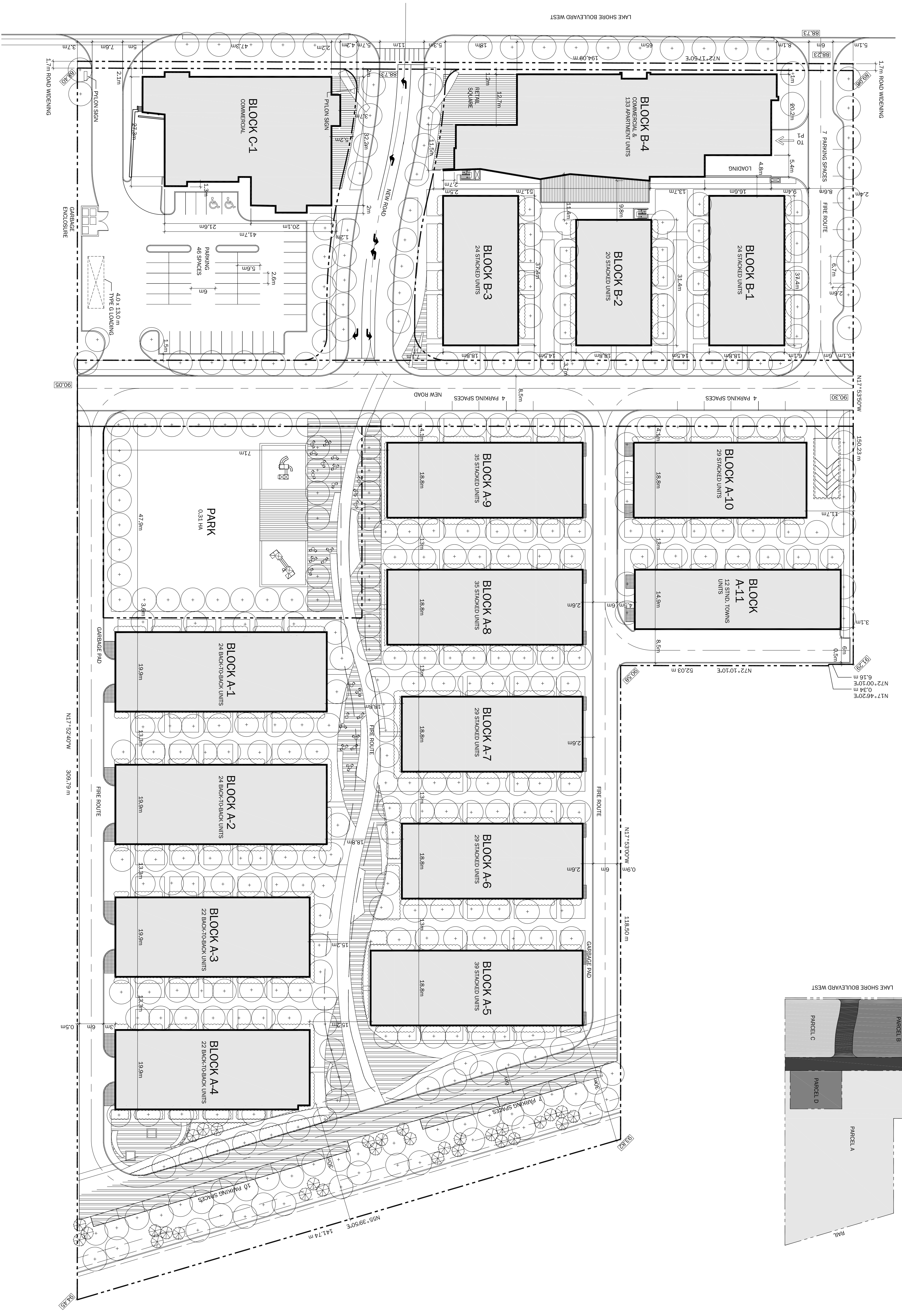
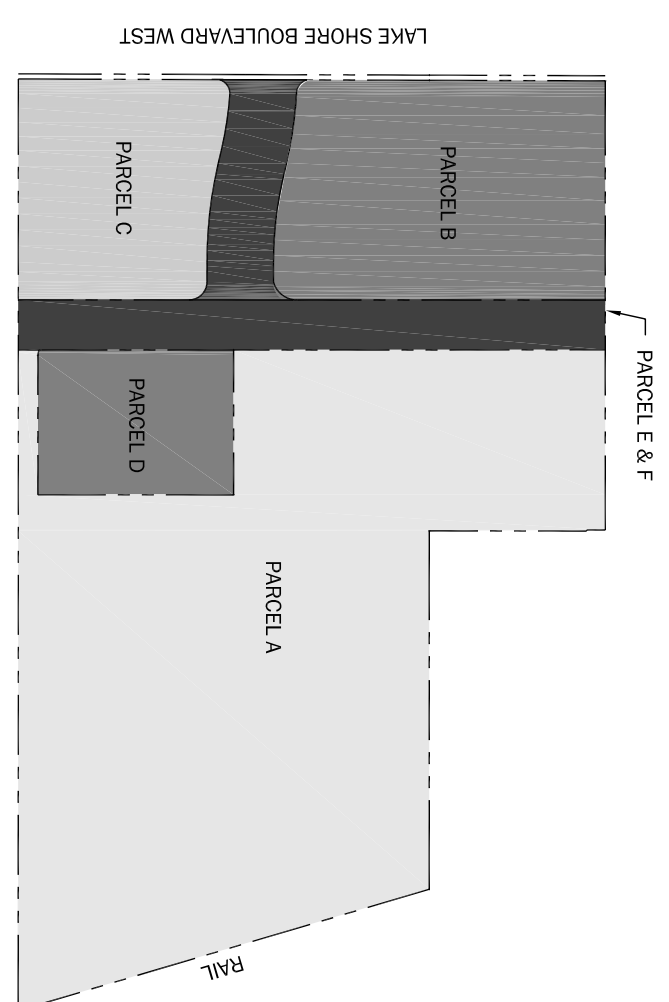
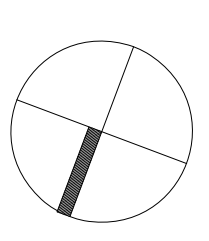


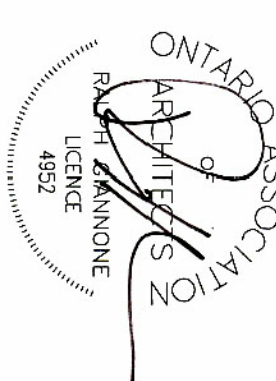
All drawings, specifications, related documents and design are the copyright property of the architect and must be returned upon request. Reproduction of the drawings, specifications, related documents and design in whole or in part is strictly forbidden without the written permission of the architect.  
This drawing shall not be used for construction purposes unless countersigned by its architect.

RALPH GIANNONE

**NOT FOR  
CONSTRUCTION**



4	ISSUED FOR REZONING	12.12.05
3	ISSUED FOR CLIENT REVIEW	12.11.30
2	ISSUED FOR REVIEW	12.11.27
1	ISSUED FOR REVIEW	12.11.16
	Revised	Date



**Gianpiero Petriconi Associates**  
Gianpiero Petriconi Associates Inc. Architects  
4837 Yonge Street, Suite 101  
Toronto, ON Canada M3J 1E3  
T: 416.591.1788 F: 416.591.1293  
www.gpa.ca

**DIAMOND CORP  
KILMER**  
3600 Lake Shore Boulevard West  
Toronto, Ontario

**CONCEPT SITE PLAN**

Project No.:	10139
Scale:	1:500
Date:	2012.11.09
Drawn by:	ED
Checked by:	GPA/A

**A0.20**

1 SITE PLAN  
A0.20 1:500

INFORMATION FOR PARCEL A PROVIDED BY GUTHRIE MILICONTI ARCHITECTS. REFER TO DRAWINGS SP2, SP3, A3, A4 DATED NOVEMBER 27, 2012.